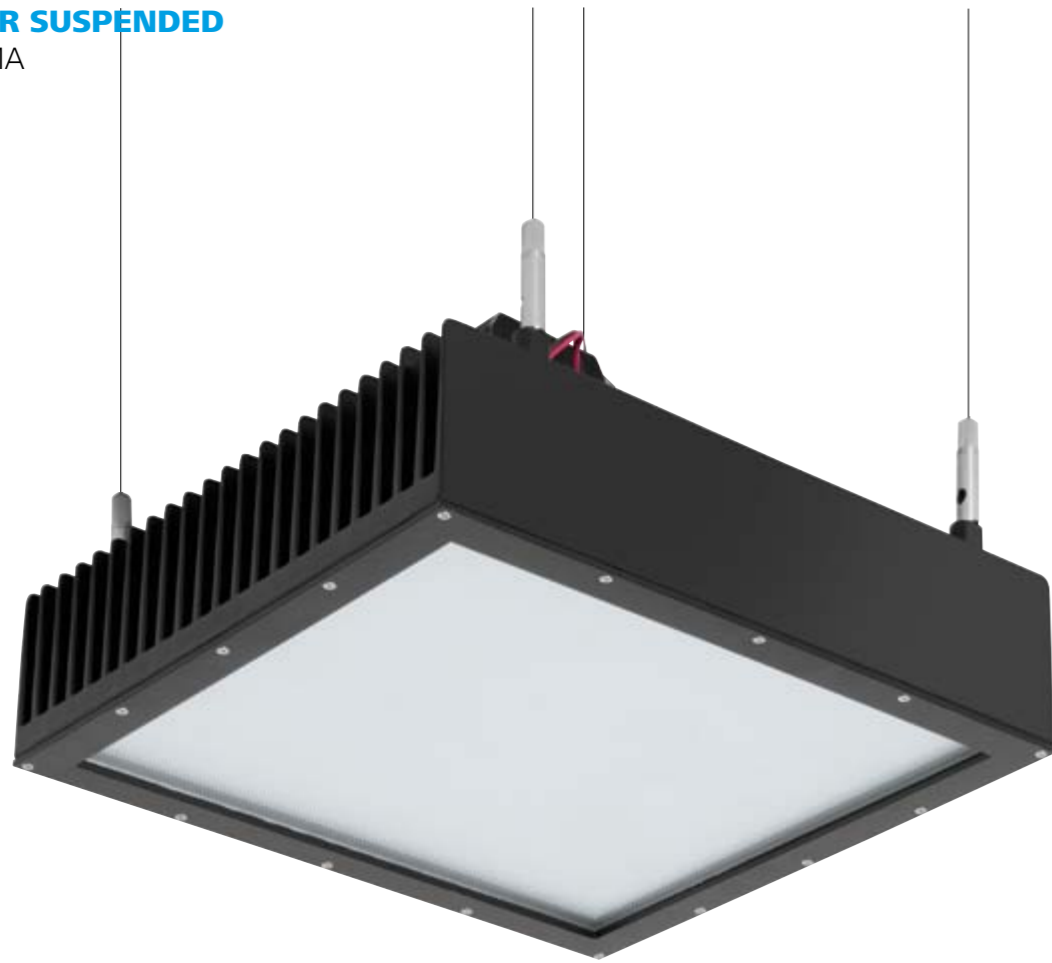


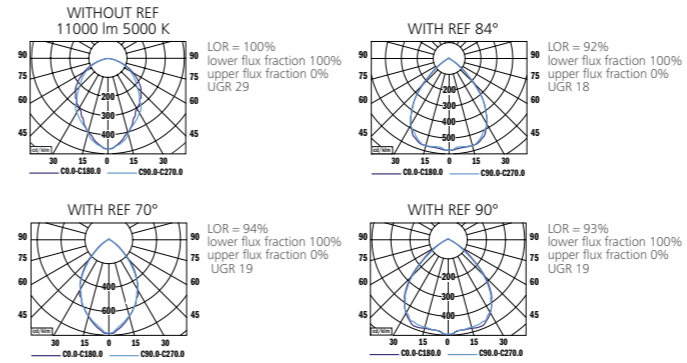
MYAR SUSPENDED

PRISMA
LED

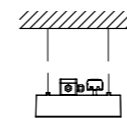


Myar Suspended

PHOTOMETRY



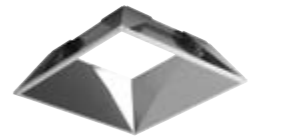
MOUNTING



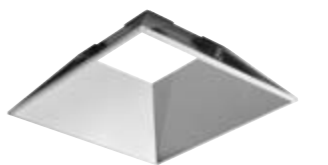
| TYPE | NET LUMEN OUTPUT (at Ta = 25 °C) (lm) | POWER CONSUMPTION (W) | SYSTEM EFFICACY (lm/W) | COLOR RENDERING INDEX CRI (Ra) | CORRELATED COLOR TEMPERATURE CCT (K) | BEAM ANGLE | WEIGHT (kg) |
|----------|---------------------------------------|-----------------------|------------------------|--------------------------------|--------------------------------------|------------|-------------|
| MYAR SSD | 10150 | 94 | 108 | 80+ | 3000 | 93° | 9.5 |
| MYAR SSD | 10650 | 94 | 113 | 80+ | 4000 | 93° | 9.5 |
| MYAR SSD | 11000 | 94 | 117 | 80+ | 5000 | 93° | 9.5 |
| MYAR SSD | 12300 | 106 | 116 | 80+ | 3000 | 93° | 9.5 |
| MYAR SSD | 12950 | 106 | 122 | 80+ | 4000 | 93° | 9.5 |
| MYAR SSD | 13300 | 106 | 125 | 80+ | 5000 | 93° | 9.5 |

Luminous flux tolerance +/- 10%.

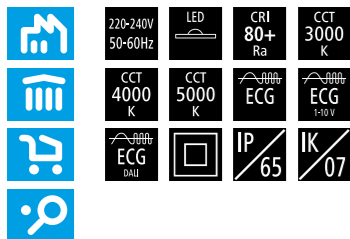
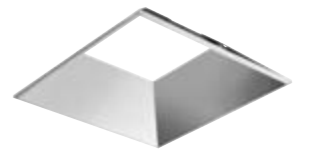
REFLECTOR 70°



REFLECTOR 84°



REFLECTOR 90°



| | | | |
|---------------------|---------------|---------------|---------------|
| 220-240V 50-60Hz | LED | CRI 80+ Ra | CCT 3000 K |
| CCT 4000 K | CCT 5000 K | ECG | ECG 10V |
| ECG DALI | IP 65 | IK 07 | |

EN

Mounting
Suspended (SSD)
Light source
LED
Optical system
Prismatic diffuser (PRD)
Wiring
Electronic control gear
FIX/DALI/1-10V (ECG/EDA/E10)
Materials
Housing: die-cast aluminium + sheet steel
Diffuser: PMMA + glass
Rope suspension
Surface finish
Housing: black RAL 9005 (B05)
Accessories
Protective foil available for food industry applications according to IFS (International Food Standard)
Reflector (beam angle 70°/84°/90°)
Service lifetime
50,000 hours/L80
Ambient temperature
From -40 °C to +35 °C

DE

Montage
Hängend (SSD)
Lichtquelle
LED
Optisches System
Prismatischer Diffusor (PRD)
Vorschaltgerät
Elektronisches Vorschaltgerät
FIX/DALI/1-10V (ECG/EDA/E10)
Material
Körper: Aluminiumdruckguss + Stahlblech
Diffusor: PMMA + Glas
Seilauflhängung
Oberflächenveredelung
Körper: schwarz RAL 9005 (B05)
Zubehör
Schutzfolie gemäß IFS (International Food Standard) für Anwendungen in der Nahrungsmittelindustrie erhältlich
Reflektor (Lichtstrahlwinkel 70°/84°/90°)
Lebensdauer
50,000 Stunden/L80
Umgebungstemperatur
Von -40 °C bis +35 °C

FR

Montage
Plafonnier Suspendu (SSD)
Source lumineuse
LED
Système optique
Diffuseur prisme (PRD)
Équipement électrique
Ballast électronique
FIX/DALI/1-10V (ECG/EDA/E10)
Matériels
Corps: aluminium moulé sous pression + tôle d'acier
Diffusor: PMMA + verre
Câble de suspension
Finition de surface
Corps: noir RAL 9005 (B05)
Accessoires
Feuille protectrice disponible pour l'industrie alimentaire selon la norme IFS (International Food Standard)
Réflecteur (angle de faisceau 70°/84°/90°)
Durée de vie utile
50,000 heures/L80
Température ambiante
De -40 °C à +35 °C

SK

Montáž
Závesné (SSD)
Svetelný zdroj
LED
Optický systém
Prizmatický difúzor (PRD)
Elektrická výbava
Elektronický predradník
FIX/DALI/1-10V (ECG/EDA/E10)
Material
Teleso: hliníkový odliatok + oceľový plech
Difúzor: PMMA + sklo
Lankový záves
Povrchová úprava
Teleso: čierna RAL 9005 (B05)
Príslušenstvo
Ochranná fólia určená pre potravinový priemysel v súlade s IFS (International Food Standard)
Reflektor (uhol vyžarovania 70°/84°/90°)
Servisná životnosť
50,000 hodin/L80
Teplota okolia
Od -40 °C do +35 °C

ES

Montaje
Suspendidas (SSD)
Fuente luminica
LED
Sistema óptico
Difusor prismático (PRD)
Cableado
Equipo de control electrónico
FIX/DALI/1-10V (ECG/EDA/E10)
Material
Cuerpo: aluminio moldeado + lámina de acero
Difusor: PMMA + cristal
Cable de suspensión
Tratamiento de la superficie
Cuerpo: negro RAL 9005 (B05)
Accesorios
Lámina protectora disponible para aplicaciones alimentarias según IFS (Estándar Alimentario Internacional)
Refletores (ángulo de haz 70°/84°/90°)
Vida útil
50,000 horas/L80
Temperatura ambiente
Desde -40 °C a +35 °C

IT

Installazione
A sospensione (SSD)
Sorgente luminosa
LED
Sistema ottico
Diffusore prismatico (PRD)
Cablaggio
Ballast elettronico
FIX/DALI/1-10V (ECG/EDA/E10)
Materiali
Corpo: pressofusione di alluminio + lamina d'acciaio
Diffusore: PMMA + vetro
Cavo di sospensione
Finitura
Corpo: nero RAL 9005 (B05)
Accessori
Pellicola protettiva disponibile per applicazioni nell'industria alimentare secondo le IFS (International Food Standard)
Riflettori (angolo a fascio 70°/84°/90°)
Durata di vita
50,000 ore/L80
Temperatura d'ambiente
Da -40 °C a +35 °C

RU

Установка
Подвесная (SSD)
Источник света
LED
Оптическая система
Призматического рассеиватель (PRD)
Электрическое оснащение
Электронный аппарат
FIX/DALI/1-10V (ECG/EDA/E10)
Материал
Корпус: литой алюминий + листовая сталь
Рассеиватель: полиметилметакрилат + стекло
Тросовый подвес
Отделка поверхности
Корпус: черный RAL 9005 (B05)
Аксессуары
Защитная фольга для применения в пищевой промышленности в соответствии с Международным пищевым стандартом (IFS)
Отражатель (угол луча 70°/84°/90°)
Срок службы
50,000 часов/L80
Температура окружающей среды
От -40 °C до +35 °C

