

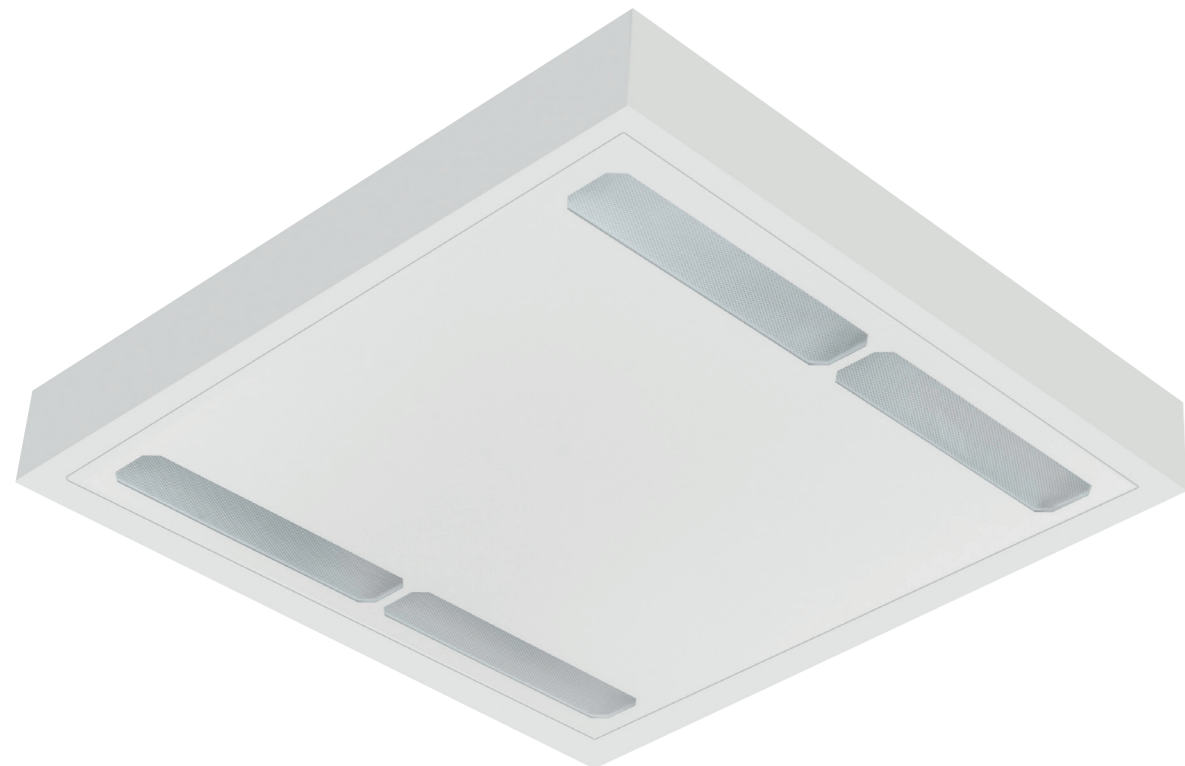
NEW

## FREYN II SURFACED / SUSPENDED

MICROPRISMA

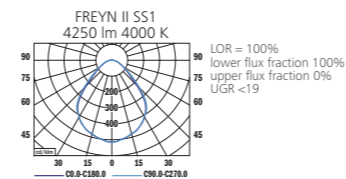
LED

FASTRUNNER

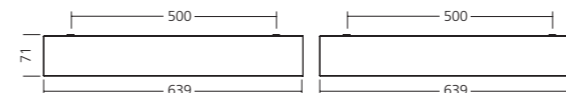


# Freyn II Surfacéd / Suspended

## PHOTOMETRY



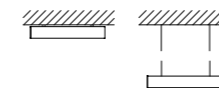
SS1



SS4



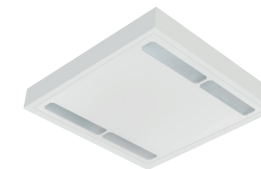
## MOUNTING



TYPE	NET LUMEN OUTPUT (at Ta = 25 °C) (lm)	POWER CONSUMPTION (W)	SYSTEM EFFICACY (lm/W)	COLOR RENDERING INDEX CRI (Ra)	CORRELATED COLOR TEMPERATURE CCT (K)	BEAM ANGLE (C0-180, C90-270)	EMERGENCY UNIT 3H (lm)	WEIGHT (kg)
FREYN II SS1	2800	26	108	80+	3000	85°, 89°	410	8.0
FREYN II SS1	3050	26	117	80+	4000	85°, 89°	420	8.0
FREYN II SS1	3900	36	108	80+	3000	85°, 89°	410	8.0
FREYN II SS1	4250	36	118	80+	4000	85°, 89°	420	8.0
FREYN II SS4	2800	26	108	80+	3000	84°, 87°	410	8.5
FREYN II SS4	3050	26	117	80+	4000	84°, 87°	420	8.5
FREYN II SS4	3900	36	108	80+	3000	84°, 87°	410	8.5
FREYN II SS4	4250	36	118	80+	4000	84°, 87°	420	8.5

Luminous flux tolerance +/- 10%.

SS1



SS4



SUS 1.35 C0/003 SUSPENSION 03



EN

**Mounting**  
Surfacéd/Suspended (SSx)

**Light source**  
LED

**Optical system**  
Microprismatic diffuser (MCD)

**Wiring**  
Electronic control gear  
FIX/DALI/1-10V (ECG/EDA/E10)  
Emergency unit variant (3H)

**Materials**  
Housing: sheet steel  
Diffuser: PMMA

**Surface finish**  
Housing: white RAL 9003 (W03)

**Accessories**  
Rope suspension

**Service lifetime**  
50,000 hours/L80

**Ambient temperature**  
From -20 °C to +35 °C

DE

**Montage**  
Deckenleuchte/Hängend (SSx)

**Lichtquelle**  
LED

**Optisches System**  
Mikroprismatischer Diffusor (MCD)

**Vorschaltgerät**  
Elektronisches Vorschaltgerät  
FIX/DALI/1-10V (ECG/EDA/E10)  
Notbeleuchtung Variante (3H)

**Material**  
Körper: Stahlblech  
Diffusor: PMMA

**Oberflächenveredelung**  
Körper: weiss RAL 9003 (W03)

**Zubehör**  
Seilabhängung

**Lebensdauer**  
50,000 Stunden/L80

**Umgebungstemperatur**  
Von -20 °C bis +35 °C

FR

**Montage**  
Plafonnier apparent/Suspendu (SSx)

**Source lumineuse**  
LED

**Système optique**  
Diffuseur microprisme (MCD)

**Équipement électrique**  
Ballast électronique  
FIX/DALI/1-10V (ECG/EDA/E10)  
Variante s'unité de secours (3H)

**Matériels**  
Corps: tôle d'acier  
Diffusor: PMMA

**Finition de surface**  
Corps: blanc RAL 9003 (W03)

**Accessoires**  
Câble de suspension

**Durée de vie utile**  
50,000 heures/L80

**Température ambiante**  
De -20 °C à +35 °C

SK

**Montáž**  
Prisadené/Závesné (SSx)

**Svetelný zdroj**  
LED

**Optický systém**  
Mikroprizmatický difúzor (MCD)

**Elektrická výbava**  
Elektronický predradník  
FIX/DALI/1-10V (ECG/EDA/E10)  
Varianta s núdzovou jednotkou (3H)

**Material**  
Těleso: ocelový plech  
Difúzor: PMMA

**Povrchová úprava**  
Těleso: biela RAL 9003 (W03)

**Príslušenstvo**  
Lankový záves

**Servisná životnosť**  
50,000 hodín/L80

**Teplota okolia**  
Od -20 °C do +35 °C

ES

**Montaje**  
Sobrepuestas en el techo/Suspendidas (SSx)

**Fuente luminica**  
LED

**Sistema óptico**  
Difusor microprismático (MCD)

**Cableado**  
Equipo de control electrónico  
FIX/DALI/1-10V (ECG/EDA/E10)  
Variante unidad de emergencia (3H)

**Material**  
Cuerpo: lámina de acero  
Difusor: PMMA

**Tratamiento de la superficie**  
Cuerpo: blanco RAL 9003 (W03)

**Accesorios**  
Cable de suspensión

**Vida útil**  
50,000 horas/L80

**Temperatura ambiente**  
Desde -20 °C a +35 °C

IT

**Installazione**  
A plafone/A sospensione (SSx)

**Sorgente luminosa**  
LED

**Sistema ottico**  
Diffusore microprismatico (MCD)

**Cablaggio**  
Ballast elettronico  
FIX/DALI/1-10V (ECG/EDA/E10)  
Variante unità di emergenza (3H)

**Materiali**  
Corpo: lamina d'acciaio  
Diffusore: PMMA

**Finitura**  
Corpo: bianco RAL 9003 (W03)

**Accessori**  
Cavo di sospensione

**Durata di vita**  
50,000 ore/L80

**Temperatura d'ambiente**  
Da -20 °C a +35 °C

RU

**Установка**  
Потолочная накладная/Подвесная (SSx)

**Источник света**  
LED

**Оптическая система**  
Микропризматический рассеиватель (MCD)

**Электрическое оснащение**  
Электронный аппарат  
FIX/DALI/1-10V (ECG/EDA/E10)  
Блок аварийного освещения (3H)

**Материал**  
Корпус: листовая сталь  
Рассеиватель: полиметилметакрилат

**Отделка поверхности**  
Корпус: белый RAL 9003 (W03)

**Аксессуары**  
Тросовый подвес

**Срок службы**  
50,000 часов/L80

**Температура окружающей среды**  
От -20 °C до +35 °C

